

MAPS GLOBAL

ANNUAL REPORT

JULY 2022 - JUNE 2023



MAPS GLOBAL
3121 MOSS SIDE AVE
RICHMOND, VA 23221
INFO@MAPSGLOBAL.ORG

TABLE OF CONTENTS

WHO WE ARE	6
SECTION 1: Our Programs	8
<i>Program Focuses</i>	8
<i>2022 - 23 Quick Look</i>	10
SECTION 2: MAPS Global Headquarters	12
<i>Five Environments</i>	13
<i>Initiatives</i>	18
SECTION 3: Expanding on the Frontier	20
<i>Frontier Bases</i>	22
SECTION 4: Finances	28





LETTER FROM THE PRESIDENT

Something has shifted. We have entered into the “building season” for MAPS Global. Over the last year, it is clear that the Lord is establishing us for the long haul. From the purchase of our Beautiful Campus, the launch of our Spring Frontier Missions School, and the increase of our staff and missionaries around the world, we are building towards our vision to see seven Frontier Mission Bases in the 10-40 Window and a thriving night and day Church expression in Richmond by 2028.

There is still much work to do. The task of the Great Commission remains unfinished. Out of the 17,000 people groups in the earth, about 7,402 are considered unreached (just over 42%). Even in the midst of the last decade, when we saw the proliferation of multisite mega churches, Christian social media influencers and celebrity pastors, the number of Unreached Peoples Groups rose from 6,943 to 7,402. We must now, more than ever, urgently call the church to consider the Great Commission in light of the worth of Jesus and the power of the gospel.

It has been a year of walking by faith and so it will continue to be. Many of you have stood by us with support and comfort on the journey. We could not do this without you. The thousands supporting this vision to see Jesus magnified and worshipped among all nations give us courage to press on. Thank you for standing with us, supporting us, praying for us, and advocating for the mission. We are so very grateful for each and every one of you and the part you carry with us in this glorious story of Jesus’ name and fame being proclaimed to the ends of the earth.

He is worthy,

A handwritten signature in black ink, appearing to read "R.A. Martinez".

R.A. Martinez



WHO WE ARE

JESUS IS WORTHY.
THE GOSPEL IS POWERFUL.
THE TIME IS URGENT.

OUR VISION

MAPS Global is a missional family that exists to pray, preach and sing in the most unreached regions of the earth until every nation sees and sings of the worth of Jesus Christ and the Great Commission is finished in our generation.

OUR MISSION

We aim to mobilize, train and send pioneering leaders to build bases in strategic cities throughout the 10-40 window. These teams will work in coalition with indigenous church planting movements and mission organizations to strengthen and empower worship, prayer, power evangelism, and biblical training for the broader regions. Our bases consist of three main components: A prayer room for joyful, sustainable worship and prayer, training schools for indigenous and international leaders, and a church family.

Section 1:

PROGRAM FOCUSES

There are five expressions we give ourselves to across the MAPS Global family. These five "WHAT'S" are essential to building Antioch Sending Centers here in Richmond and across the global cities of the 10/40 window. We define these for everyone who comes into the organization so that each individual has the dignity of making the decision to say "yes" to giving their strength to move together in the same direction with the global family.

01. PRAY AND WORSHIP

Our central ministry together is to host the Presence of God, to minister to Him day and night and to create a place where people from all over the world can meet with the Living God.

02. TRAIN AND DEVELOP

We are training and developing pioneering leaders in an environment of prayer, worship, and frontier missions.

03. SEND AND PLANT

We are sending missionaries and planting bases of prayer, worship and training in strategic cities throughout the 10-40 window.



04. MOBILIZE AND PREACH

We are mobilizing this generation to consider giving their lives to pray, preach and sing of the worth of Jesus and to understand what part they play in the Great Commission.

05. BUILD A PRESENCE-CENTERED FAMILY

We are a family living a life together and cultivating an atmosphere where many can encounter God, and be loved, healed, restored, and launched into their assignments.

2022-23

QUICK LOOK

In 2022-23, we settled into our new home, the Beautiful Campus thanks to our generous partners. We gave our hands to continued growth and added one new Frontier Base and saw the formation of five dynamic Environments at our Headquarters. We increased our staff reality by 50% and trained more students than ever across our locations, all because of your help.

\$3.58 M

Total revenue last year
(a 34% increase year over year)

96 STAFF

Total staff
(a 50% increase year over year)

43 STUDENTS

Total students trained



7 LOCATIONS

Locations Served: Eurasia, Levant, Middle East, Arab Gulf, Himalayas, East Africa, Richmond

3,418 HOURS

Total hours of live worship
across 4 locations

670K REACHED

Total number of accounts
reached through mobilization

Section 2:

MAPS GLOBAL HEADQUARTERS

The MAPS Global Headquarters is located in Richmond, Virginia. Our Headquarters hosts our flagship Frontier Missions School, Global Prayer Room, Weekend Services, Mobilization, and global operations. From our headquarters, we plant and build strategic bases for prayer, worship and training in global cities across the 10/40 Window. Our MAPS Global Missions Base serves as the operations hub, the core family, and the prototype for all of our bases on the frontier.



Environment

TRAINING

OVERVIEW

MAPS Global's aim is to cause hearts that expand in love as heads expand in knowledge and hands are equipped to carry the anointing and power of the Spirit.

We liken our training environment at MAPS Global to a greenhouse where a new generation can grow strong, healthy, and ready to be launched. Central to building that environment is a spiritual family whose rhythm of life is centered around the presence of God in worship, prayer, and teaching. We are cultivating a life together and an atmosphere here at MAPS Global where many will come to be healed, restored, trained, loved, and launched. They will be priestly ministers and pioneering laborers that are launched into the neighborhoods and nations of the earth to pray, preach, and sing until the name of Jesus is made famous and the incense of worship arises in every place (Malachi 1:11).

STATISTICS

FRONTIER MISSIONS SCHOOL

- 24 Fall students trained
- 9 Spring students trained
- 5 3-month placement teams sent

TRAINING INITIATIVES

- 59 Fall attendees trained
- 20 Spring attendees trained
- 5 Training open house events



THE FIVE ENVIRONMENTS AT MAPS HEADQUARTERS

- PRAYER
- TRAINING
- COMMUNITY
- OUTREACH
- MOBILIZATION

Environment

PRAYER

OVERVIEW

The Global Prayer Room is our flagship prayer room at MAPS Global Headquarters. It is a multi-ethnic, multi-lingual, multi-congregational, and multi-generational community that is hosting God's presence through worship with prayer. God's desire is for a beautiful collection of various styles of worship to join together as one voice to fill the capital city of Virginia daily. It is a prayer room "for the city, by the city, to the nations". Hosting God's presence is at the center of all that we do, therefore worship and prayer are at the center of all we do.

INITIATIVES

- Week of 24/7 Prayer and Worship

During the last week of May, leading up to the one-year mark of our first services at the Beautiful Campus, the MAPS community came together with over 100 volunteers (and even more participating) to host 140 hours of LIVE prayer and worship.



STATISTICS

PRAYER ROOM

- 2100 live hours of worship and prayer
- 62 musicians and singers involved
- 3 new staff onboarded
- 12 local congregations involved
- 7 ethnicities represented
- 22 music students trained

COMMUNITY

- 240 average weekend services attendees
- 62 average global kids and youth attendees
- 5 Living Room small groups
- 7 Front Porches events
- 9 Global Daycare students

Environment

COMMUNITY

OVERVIEW

July 2022 marked the official opening of MAPS Weekend Services to the public at the new MAPS Headquarters, the Beautiful Campus. In less than a year, the weekend attendance had doubled. In February of 2023, the Community Environment was established with a Director to begin building healthy structures and rhythms to care for, connect with and equip individuals and families in Richmond and for the nations.

SERMON SERIES

- **With Jesus on the Mountain (Matthew 5-7)**
- **The Dove**
- **The Father's House (Luke 15:11-32)**
- **No Shame November**

ADDITIONAL PROGRAMS

First Fridays

Every First Friday of the month we host a regional gathering that includes worship, prayer, and extended ministry times with preaching and teaching. Worship is led by blended teams consisting of individuals from multiple churches and MAPS Global Staff. There have been physical and emotional healings, destinies repaired, people restored and many impacted by God's presence.

Front Porches

Front Porches are our monthly gatherings to "break bread and build friendship."

Living Rooms

Living Rooms are our small groups in home settings that are designed to establish a connected spiritual family, help individuals grow in life, and pull people into the mission of MAPS Global.

TESTIMONY

"During a Weekend Service, an individual who had received a blow to the head causing brain injury was prayed for and recovered healing. The healing was verified by the doctors a week later as the individual was able to perform physical functions that they had not previously been able to."

MOBILIZATION

In 2018, Barna Research Group published a study asking church-goers in America whether they had ever heard of or could explain what “The Great Commission” is. 82% responded that they had never heard of and could not explain it. **This is mobilization crisis.** It’s important to understand that the Great Commission was given to the church not just to individuals. It is a corporate mandate for the church. Therefore, the Great Commission is the plumb line for every other kingdom assignment and the preeminent mandate of the church.

To mobilize means to take something that is static and get it into motion. Because everyone has a part to play in the Jesus’ Commission, we want to get this generation of believers moving in prayer, giving towards and going to those who have no access to the gospel. It is our firm conviction that this is an urgent need in the body of Christ in light of the worth of Jesus and the hour we live in.



STATISTICS

60K

PODCAST DOWNLOADS

4K

EMAIL LIST

221K

INSTAGRAM REACH

351K

FACEBOOK REACH

34K

YOUTUBE VIEWS

= 670K

COMBINED REACH

STATISTICS

14K

Live stream viewers

6,537

Facebook page visits
(24% increase year over year)

8,893

Instagram profile visits
(70% increase year over year)



Initiatives

ANNUAL GATHERING

Once a year, the MAPS Global family gathers together from across the nations to our Headquarters in Richmond, VA to celebrate and remember all that God has done over the last year, to strengthen relationships as a global family, and to receive from leaders in the prayer, worship, and missions movement. Speakers included Stacy Campbell, J.T. Thomas, Jason Upton, Jason Hershey, and Chief Anne Richardson.

We also hosted Global Kids Camp during the first week of August. Global Kids Camp aimed to develop kids aged 2-12 as young pioneers, learning the value of prayer and worship, reading the Bible, community, creativity, and more. More than 50 kids attended Global Kids Camp last year.



Initiatives

50 HOURS

This year our Frontier Missions bases and partners in the region joined together once again in concert to exalt Jesus across the Middle East. Each of our Missions Bases hosted a 50 hour prayer meeting simultaneously as we covered the region with the atmosphere of heaven. We took a stand at the end of Ramadan to pray for the Middle East to be filled with power and love, a great end-time harvest of souls to come in across the Muslim world and Israel, and a governmental shift across the region releasing God's kingdom purposes in the nations.

TESTIMONIES BY LOCATION

- **Eurasia** - Our Eurasia Missions Base had over 100 people come in and out of the prayer room. Over 2/3 of the worship was in the local language. Over half of the room that attended the worship event were indigenous believers!
- **Arab Gulf** - This year we helped our partners in the Arab Gulf host their first non-stop 50 hours along with us! Believers from many different nations across Central and Southeast Asia gathered together to exalt Jesus.
- **Levant** - 11 churches gathered under the name of Jesus to magnify His beauty over the region.
- **Middle East** - Over 300 people came in and out of the house of prayer within those three days. The Presence of God was so tangible that the worship continued for hours even after the 50th hour finished.



Section 3:

EXPANDING ON THE FRONTIER



EURASIA

OVERVIEW

We believe that, as in the days of old, God is raising up a great prayer, worship, and gospel movement from Eurasia that will launch new leaders into the regions of Eurasia and Central Asia to proclaim the gospel and to plant worship-filled communities.

EURASIA MINISTRY PROGRAM

Our Eurasia Ministry Program is designed to train emerging indigenous leaders in theology, leadership development, and practical ministry skills in a presence-centered environment of daily worship and prayer in our prayer room at the Eurasia Missions Base.

This is a full time residential 8 month program for potential indigenous leaders in our nation. We provide 6 months of theological education in the local language as well as pastoral support, ministry and evangelism opportunities. Then, our students are sent on a month long ministry assignment to an unreached portion of the country.

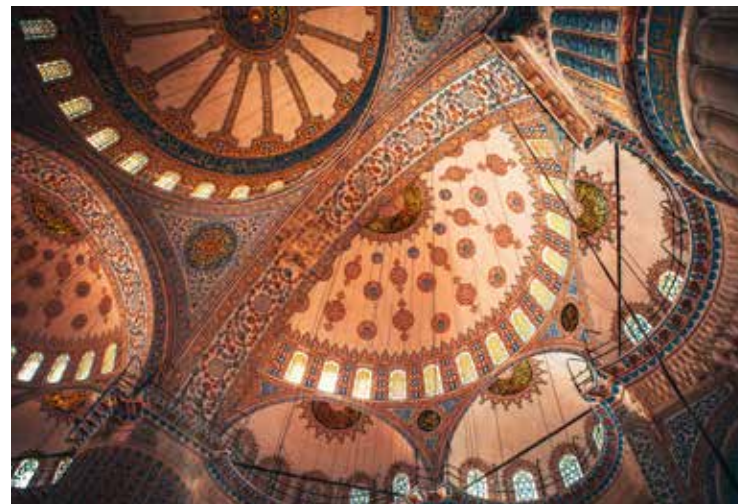
INITIATIVES

- Indigenous church network retreat
- Tuesday night worship services
- Prophetic conference - teaching and ministry



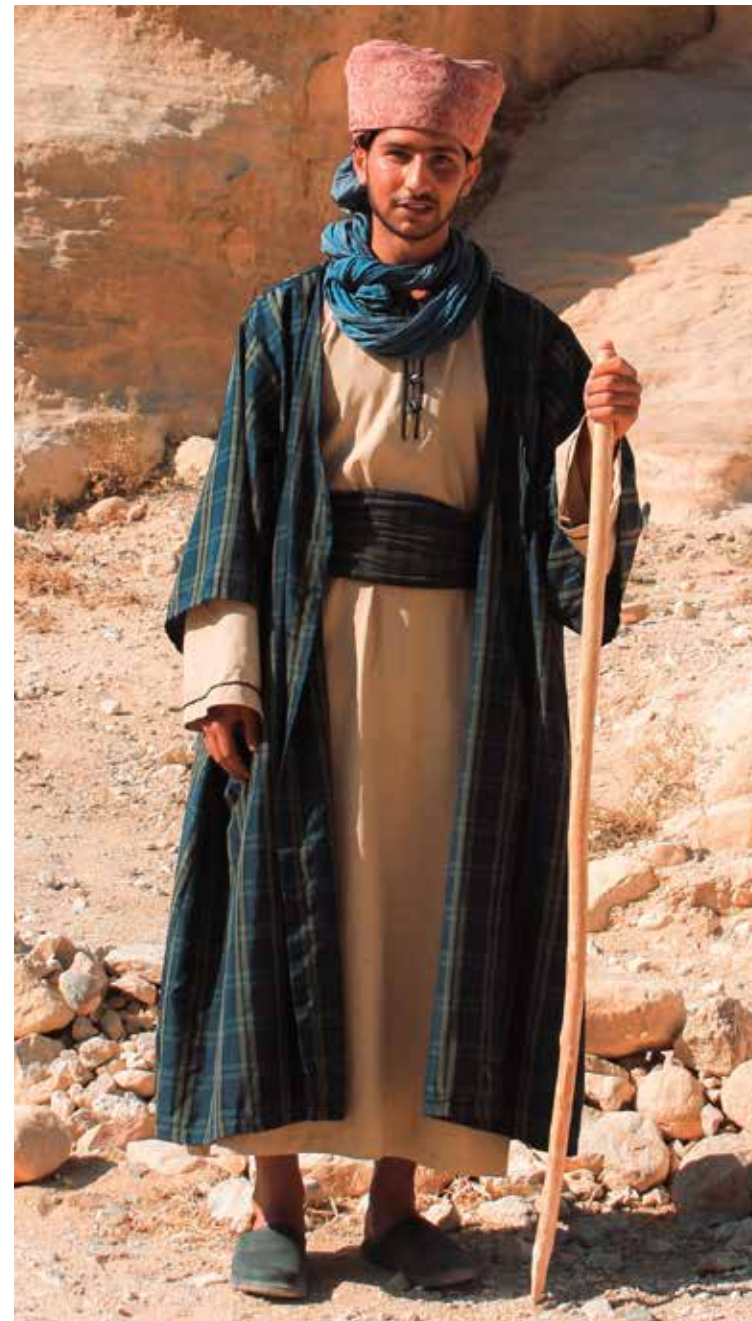
TESTIMONY

"We've been praying for an increase in indigenous worship to arise here in Eurasia; for songs to be sung and written with a local expression and heart. Recently there has been a number of spontaneous moments in the house of prayer with local believers leading the worship times. One of the young men who is a student in our training program has written two songs that came organically and spontaneously from these times. He's also been encouraging other locals to join him on the worship team, so that most of the time his team is entirely indigenous. One Thursday evening during one of our worship times, one of the local brothers was upstairs when two young men came to the door of the house of prayer. They said to him, "We are Muslims, and we are curious can we come in and ask questions?" He invited them in and along with a couple other believers they talked with the men. One of the questions they asked was "Why do you believe Mary is part of the Trinity?" One of the indigenous believers opened the Bible to John 1:1 saying "Look here it says, in the beginning was the Word.... There's no Mary, just God." They shared the gospel with the two men, gave them a Bible in their indigenous language and invited them to come back to church service on Sunday. This has happened twice in the last few weeks, where Muslims have come to our door as we were worshiping Jesus. The presence of God drew them in, and we were able to share the gospel with them."



STATISTICS

- 5 staff members
- 4 local congregations involved
- 7 ethnicities represented
- 6 students trained
- 14 baptisms
- 288 live hours of worship and prayer
- 20 volunteers served monthly
- 50 average weekend services attendees



Frontier Base

MIDDLE EAST

OVERVIEW

The Middle East Missions Base is a center for prayer, worship, training, and community in a capital city in the heart of the Middle East. It is a multicultural community of both international and indigenous people centered around worship and prayer arising in response to the worth and beauty of Jesus. Our base hosts unbroken prayer and worship, strengthens, empowers and equips the local church, and reaches the lost with the Gospel of Jesus Christ.

TESTIMONY

“It was nearing the end of winter here in the Middle East, when our team planned an outreach into one of the southern governorates. There was only one church in the region and its spiritual dryness matched the physical barren landscape. We had been hearing from the Lord about His desire to bring life to the desert, so we set up a day to go and minister to this single little church. The presence of God was potent from the first note played in the meeting and everyone was encountering the Lord with a fresh zeal that many in the pews had never experienced. A couple hours in, the oldest woman in the room walked up to us saying, “Your team is sent from God.” She was holding an open Bible in her hands. “I was blind in one of my eyes and walked into the room this morning unable to read my Bible, but look! I can read!” She made us watch her as her eyes scanned the pages with understanding. “See?! God healed my eye!” Our team rejoiced with her and her family, knowing deep down that in the driest fields, in the hardest lands, amidst crumbling churches, God is opening eyes to see Him.”

INITIATIVES

- Indigenous training program
- Tuesday night worship services
- Local and regional outreach

STATISTICS

- 12 staff members total
- 6 indigenous staff members
- 4 students trained
- 960 live hours of worship and prayer
- 62 musicians and singers involved
- 5 team sets weekly



LEVANT

OVERVIEW

In the midst civil war, borders closed, enemies without and enemies within; in a land where many have taken refuge, while thousands of others flee, God is raising up a center for prayer, worship, training, and community in this capital city. This region is ripe for revival. Weary from war, political inefficiency, and economic instability, many need the hope of the Gospel. Isaiah 61 promises the good news will be preached to the poor. After so many bad reports, the Levant region is ready to hear the good news.

The Levant Missions Base is a multicultural community of both international and indigenous people centered around worship and prayer arising in response to the worth and beauty of Jesus. Out of the place of prayer and worship, our Levant team strengthens, empowers and equips the local church, serves the poor and reaches the lost with the Gospel of Jesus Christ.

PLANTING TEAM

After leading a team to the Levant in April to host the 50 hours of worship and prayer regional event, the Levant Missions Base officially launched on May 30th with our team leading daily prayer and worship, training ingenious worshipers and serving the poor.



TESTIMONIES

“During two different house visits, we were able to pray for women who had debilitating back pain. Both women were healed of pain and able to resume normal physical activities! The following week, a teenager who had heard about the back healing and wanted prayer for healing came to church. He had a tumor on his spine causing his back to be bent over. We prayed for him, and the tumor started shrinking. His spine started moving into place, and his back straightened out. When the teen went to his doctor to get a tumor scan, the doctor confirmed that the tumor was gone! The scan showed no evidence that a tumor was ever there...”

“I noticed a young man in our church community who had drums tattooed on his arm. I invited him to play drums in the house of prayer with us during a time of corporate worship and he said yes. During this time, the Lord markedly moved in his heart. He said he had never experienced worship like that before while playing drums. After, he told me that he had played drums before coming to Christ and had used it for the wrong things. When he came to Christ, he wanted to get away from his past, and he deleted all videos of himself playing drums. But that night, the Lord showed him how he could use his passion for drums to glorify God. Now, the young man is pursuing how to use his gifting and passion for the Lord in worship.”

STATISTICS

- 3 staff members
- 11 local congregations involved
- 5 ethnicities represented
- 70 live hours of worship and prayer
- 2 musicians and singers involved
- 70 average weekend services attendees



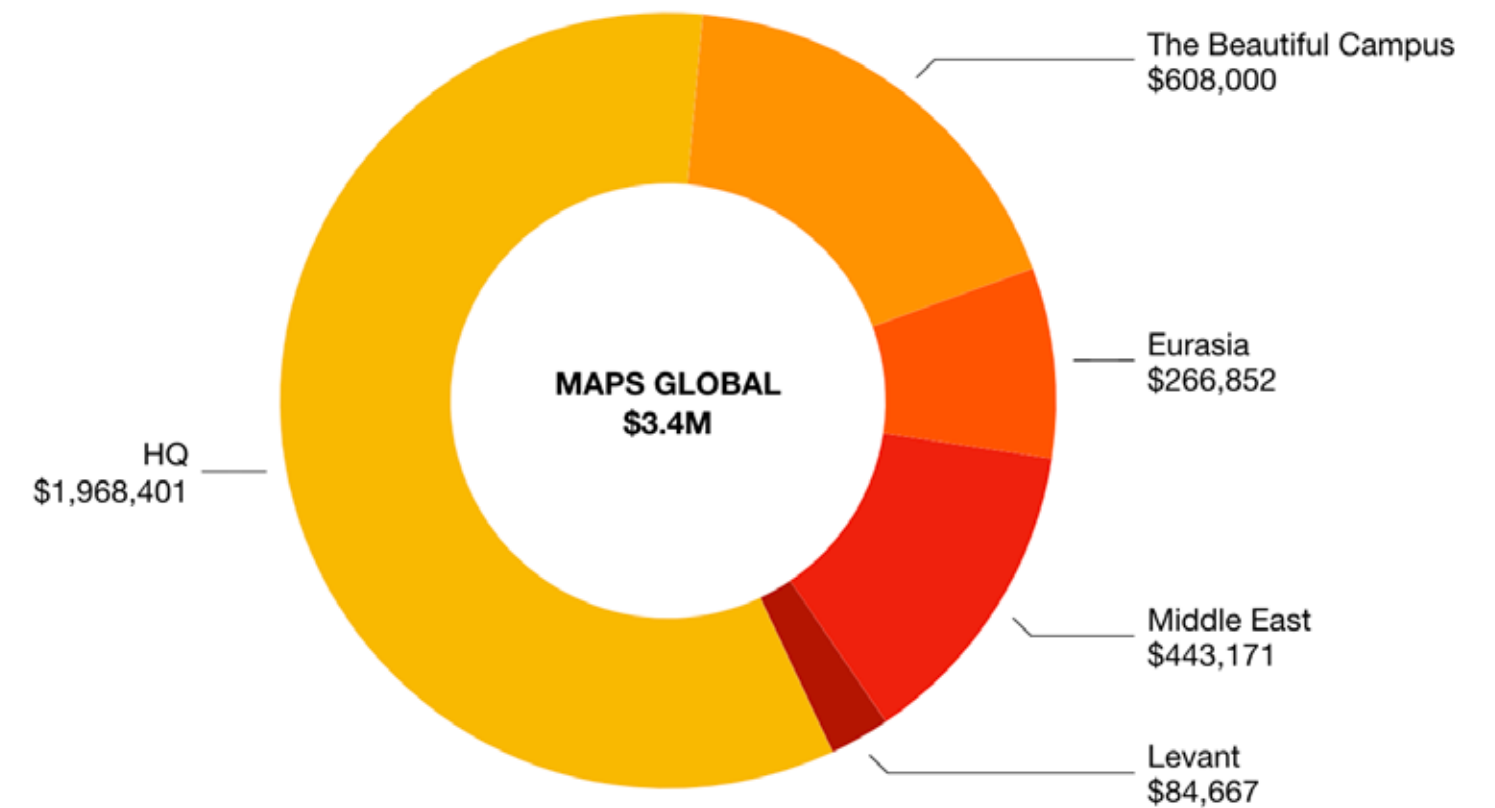
Section 4:

FINANCES

FINANCES AT A GLANCE

With significant growth in staff and international partnerships, we saw

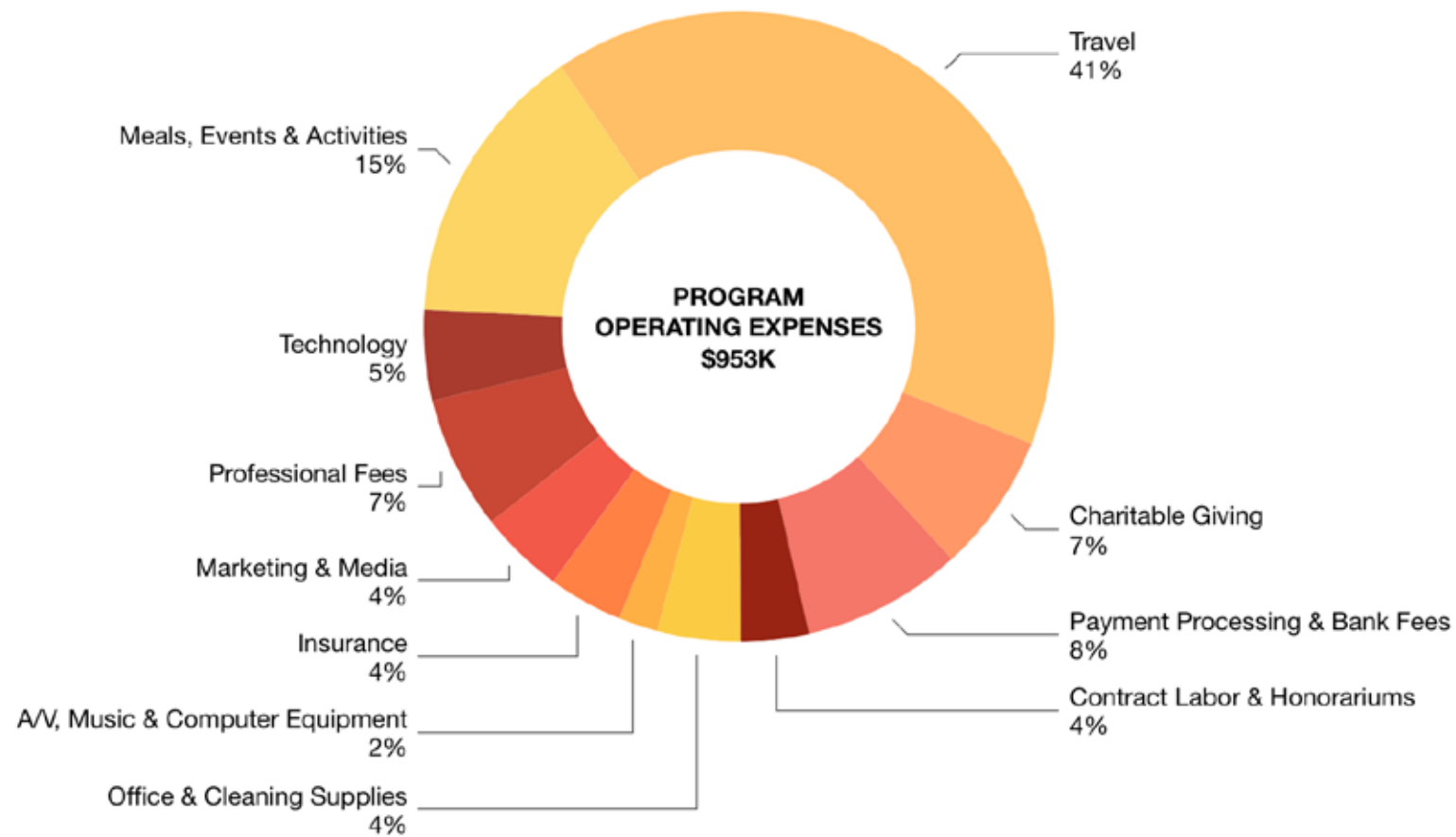
- Total Revenue in the past year: \$3.58 M, a 34% increase year over year
- \$2,070,250 invested into staff and missionaries
- \$3,530,633 in assets \$3,493,031 in long term liabilities
- 2,500 Donors contributed 18,112 donations, a 25% increase in donations year over year



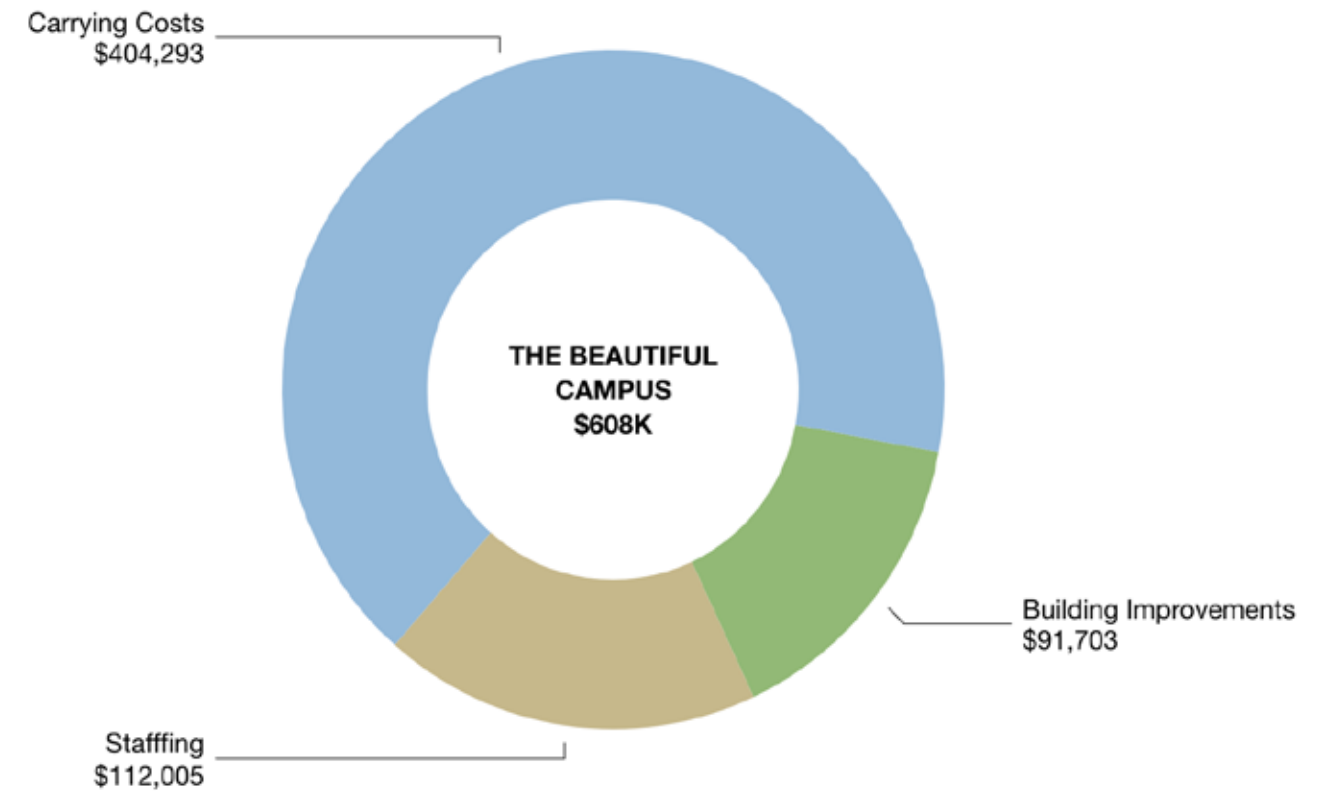
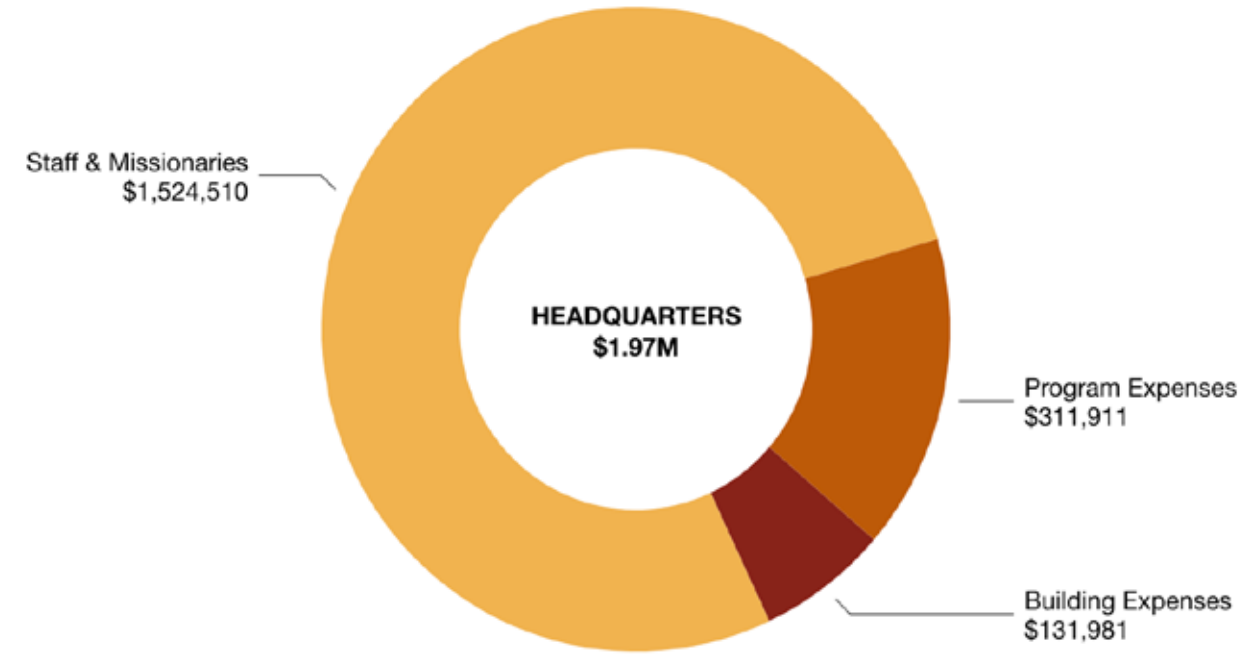
MAPS GLOBAL FINANCIALS

Our program operating expenses are largely funded by our Global Partners Community who make it possible for our focus to remain on training and sending laborers to build our Headquarters in Richmond and strategic bases overseas.

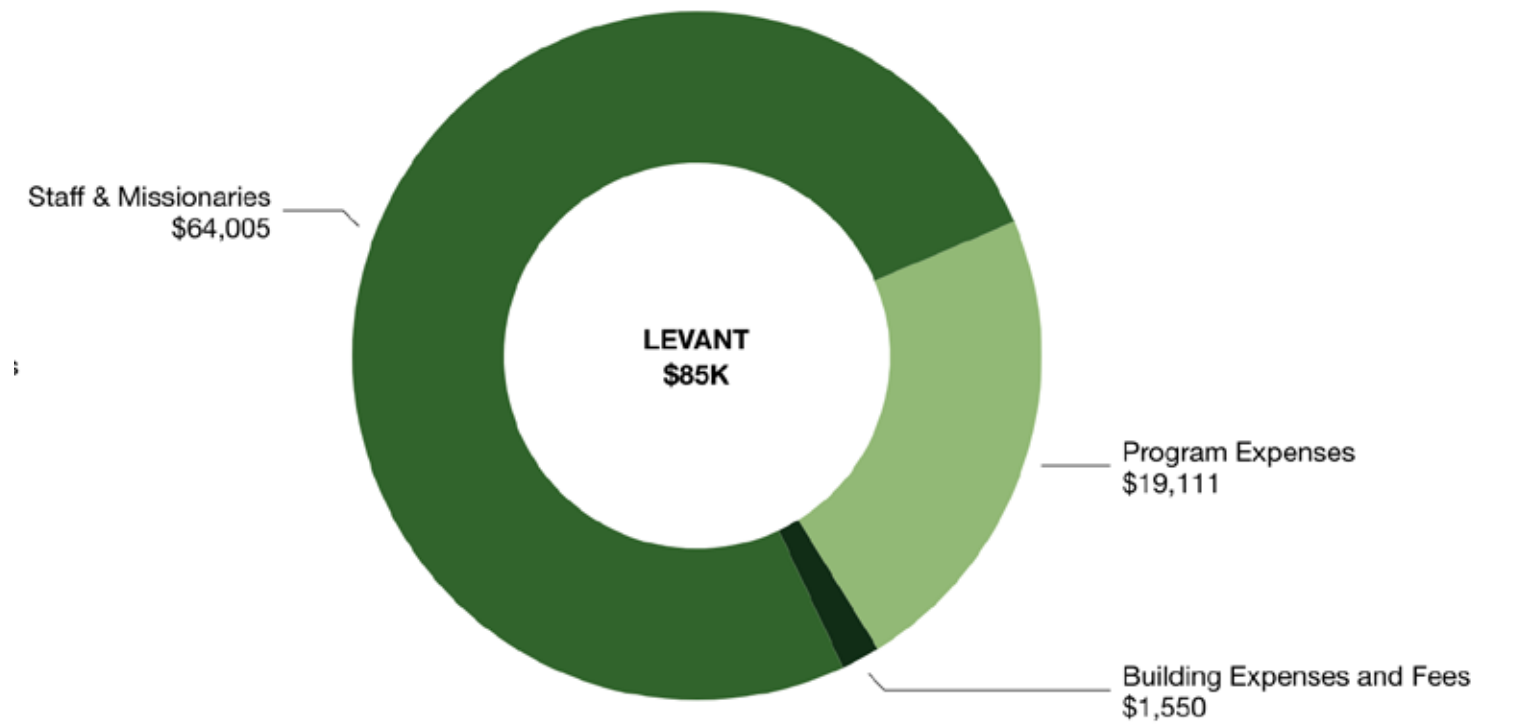
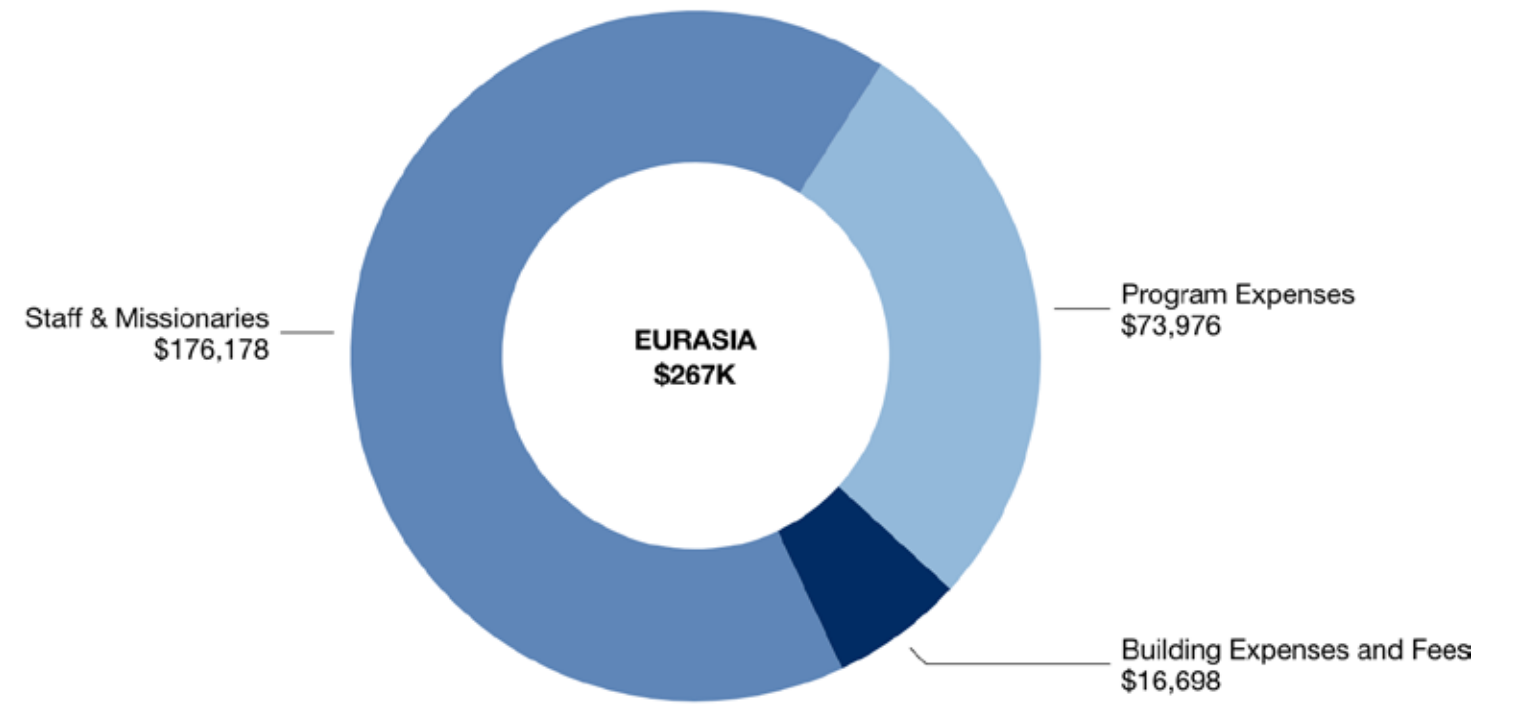
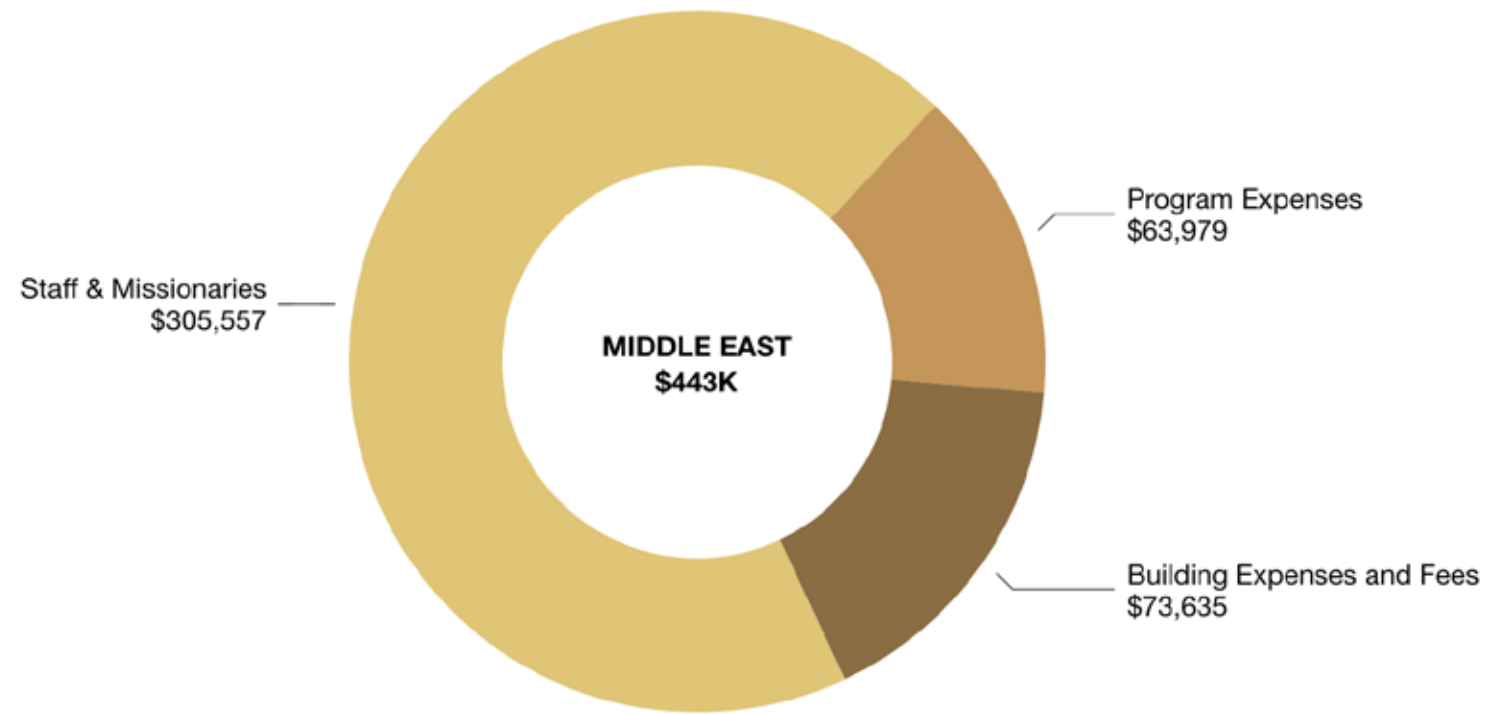
MAPS GLOBAL ORGANIZATIONAL



MAPS GLOBAL HEADQUARTERS



MAPS GLOBAL FRONTIER BASES





OUR BUDGET FOR THIS YEAR IS
5 MILLION
SO WE CAN EXPAND TO
7 BASES BY 2028



**THANK YOU
FOR YOUR
CONTINUED
SUPPORT!**



To give by card or ACH, go to www.mapsglobal.org/give

To give by mail, make checks out to **MAPS Global** and send donations to **P.O. BOX 4570, Richmond, VA 23220**

To give by stock, bond or cryptocurrency send an email to finance@mapsglobal.org



MAPS
GLOBAL

WWW.MAPSGLOBAL.ORG